

10 MINUTE
TRAINING
TOPIC

Blind Spots and Proper Mirror Adjustment

January 2019

SafetyFirst



Passenger Vehicles

- Blind Spots
- Proper Mirror Adjustment
- Keep in Mind

Large Commercial Vehicles

- The No-Zone
- Proper Mirror Adjustment
- Sharing the Road Safely



Did you know....

Blind spot accidents are responsible for 300 deaths each year!



Passenger Vehicles

Blind Spot Locations and How to Minimize Them

Blind Spots

Be especially aware of blind spots:

- At intersections and crosswalks - Objects, such as street signs and trees, can make it impossible to see.
- When making a left-hand turn - Vehicles in the outside lanes may not be visible around other oncoming traffic.
- When changing lanes – Be aware of the traffic, use your turn signals, and check your blind spots.
- When backing up – Before backing up, get out and walk around your vehicle to be sure the area is clear. If equipped, use your backup camera.



Proper Mirror Adjustment

Set your mirrors so that once a car leaves your inside mirror, it appears in your side view mirror. Once it leaves your side view mirror, it appears in your side window/peripheral vision.

1. Park your vehicle and place your head against the driver's side window. Set the mirror so you can just see the side of the car.
2. To adjust the passenger side mirror, position your head at the middle of the vehicle. Set the mirror so you can just see the side of the car.
3. Adjust the inside mirror so that you can see the entire rear window. You should only have to move your eyes, not your head, when using this mirror.



Keep in Mind

Many new vehicles are equipped with blind spot monitors. Do not rely solely on these alerts. These monitors have limitations, including an inability to detect fast moving vehicles.

Proper mirror adjustment and blind spot monitors do not eliminate the need to turn your head and check your blind spot before changing lanes!



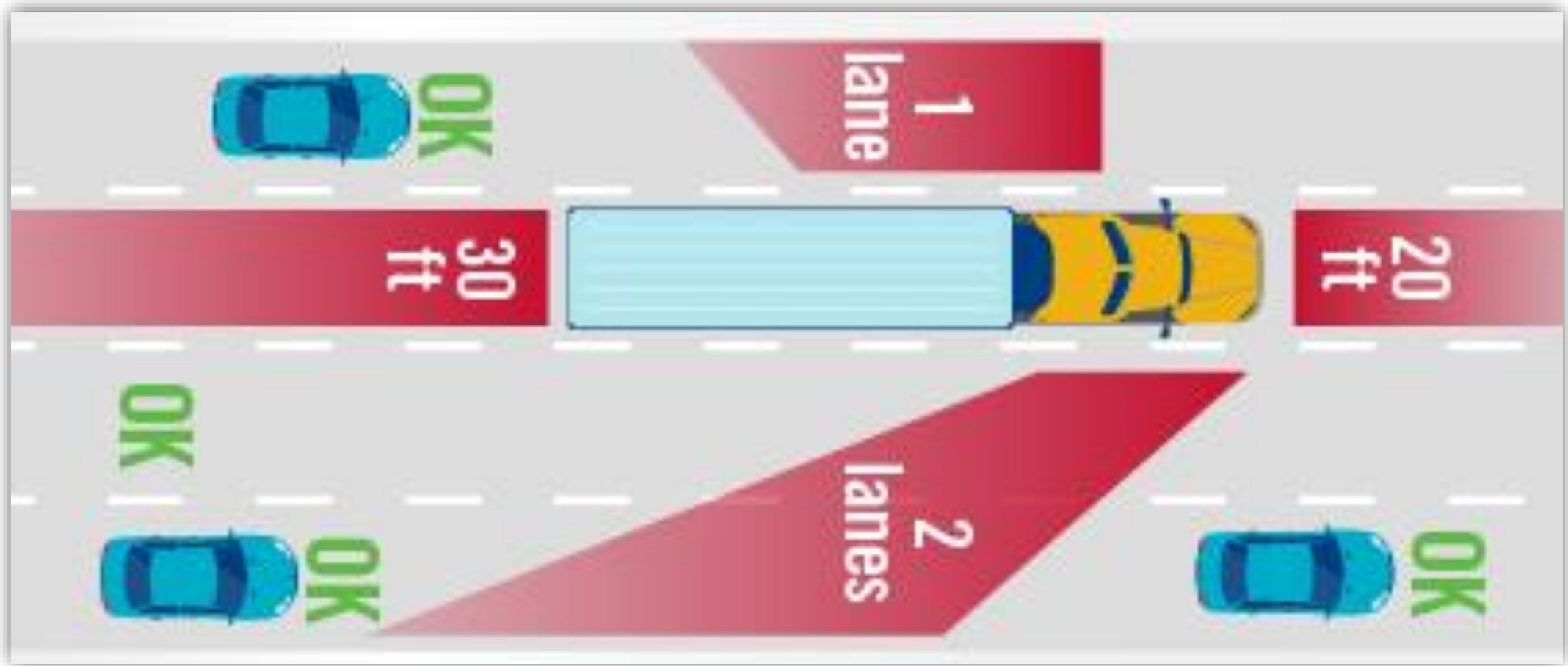
Large Commercial Vehicles

The No-Zone, Mirror Adjustments and
Sharing the Road

Easier To Load • Seats 3

Know the No-Zone

Large trucks, tractor-trailers and buses have large blind spots, called the “No Zone.” Commercial drivers have limited or no visibility in these zones.



Proper Mirror Adjustment

Adjust:

1. The primary mirrors so that the inside edge of the mirror picks up the trailing corner of the trailer or box and the horizon is in view in about 1/3 of the mirror and the ground in 2/3.
2. The auxiliary convex mirror so that the edge of the trailer or box is seen at the edge of the mirror.
3. The side convex mirrors so the side of the vehicle is barely visible, and the horizon is just out of sight.
4. The hood- or fender-mounted mirrors to show the side of the vehicle with the tires visible in the top edge of the mirror.
5. The look-down mirror to pick up the blind spot on the side of the truck.



Helpful Hints:

Mirrors should be installed as wide as possible to ensure a full view of the rear of the trailer or box.

For wide loads, mirrors should be installed with extension brackets to have the ability to be extended.

Sharing the Road Safely



- Stay out of the No-Zones as much as possible!
- If you can't see the side mirrors, the driver can't see you.
- Do not tailgate! The American Trucking Association recommends at least a 4 second or 25 car length following distance.
- Don't linger in a blind spot, slow down or move ahead in order to stay visible.
- Always pass on the left and don't move back over until you can see the truck's full cab in your inside mirror.

Blind Spots and Proper Mirror Adjustment

- Be aware of blind spots, both your own and other vehicles on the road.
- Know how to properly adjust your mirrors to help eliminate blind spots.
- Proper mirror adjustment and blind spot monitors do not eliminate the need to turn your head and check your blind spot before changing lanes!



Tips for safely sharing the road with large commercial vehicles:

- Stay out of the No-Zones as much as possible!
- If you can't see the side mirrors, the driver can't see you.
- Do not tailgate! The American Trucking Association recommends at least a 4 second or 25 car length following distance.
- Don't linger in a blind spot, slow down or move ahead in order to stay visible.
- Always pass on the left and don't move back over until you can see the truck's full cab in your inside mirror.

